

## How to move page-files system (Improving Computer Performance Part II)

### Why

Here is what you would find in Microsoft Help file ... (keyword Virtual memory)

....

When your computer is running low on RAM and more is needed immediately to complete your current task, Windows 2000 uses hard drive space to simulate system RAM. In Windows 2000, this is known as Virtual Memory, and often called the page file. This is similar to the UNIX *swapfile*. The default size of the virtual memory pagefile (appropriately named *pagefile.sys*) created during installation is 1.5 times the amount of RAM on your computer.

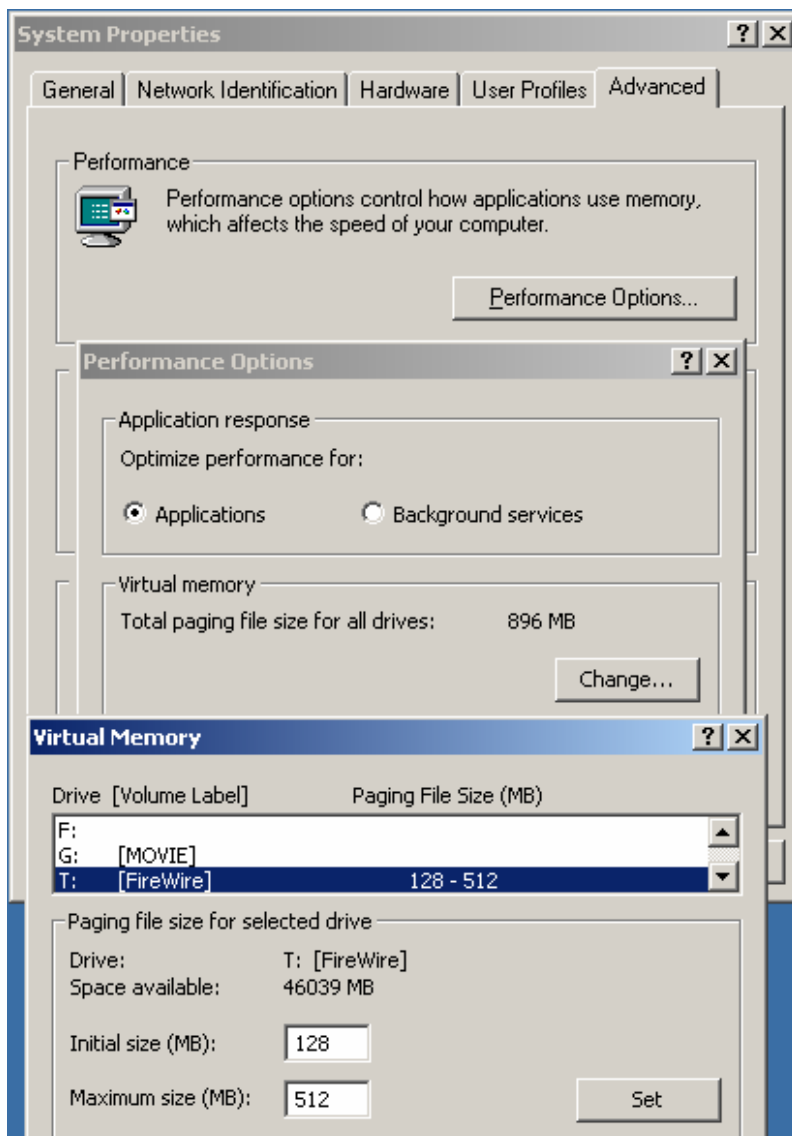
You can optimize virtual memory use by dividing the space between multiple drives, especially by removing it from slower or heavily accessed drives. To best optimize your virtual memory space, divide it across as many physical hard drives as possible. When selecting drives, keep the following guidelines in mind:

- 1) Try to avoid having a pagefile on the same drive as the system files.
- 2) Avoid putting a pagefile on a fault-tolerant drive, such as a mirrored volume or a RAID-5 volume. Page files do not need fault-tolerance, and some fault-tolerant systems suffer from slow data writes because they write data to multiple locations.
- 3) Don't place multiple page files on different partitions on the same physical disk drive.

.....

So even Microsoft suggests that computer should move the pagefile system out of C: drive (the heaviest access drive) to improve the computer performance...

Since you already implemented the temp file relocation (see the Improving Computer Performance Part I at [www.caloptic.com](http://www.caloptic.com) **Tips and Tricks** section). You may just move the page file to this HDD (FireWire HDD) to take the advantage of dual buses dual HDD performance, because C: (IDE) and second HDD FireWire (1394 bus) run on TWO independent buses therefore computer data path has a bandwidth of 150MB/sec instead of 100MB/sec and both HDD can run simultaneously.



### How

Go to: System Properties – Advance Tab (see image)

- 1) Select Performance Options
- 2) Select Applications; click the Change Button to make a change to the set up.
- 3) Select C: drive
- 4) Remove the page file system by clearing the (blank out) the Initial size and Maximum size fields
- 5) Confirm the change by clicking Set button
- 6) Select FireWire drive
- 7) Enter Initial size: 128 and Maximum size 1.5x memory size.
- 8) Example: Physical memory 512 then Maximum file is  $768 = 512 * 1.5$  or if memory of 256 then Maximum file is  $384 = 256 * 1.5$
- 9) Confirm the change by clicking the Set button
- 10) This change requires system to reboot to take effect.
- 11) Restart the computer.

Please note:

Since the page file system has changed a new page needs to be set up at FireWire HDD, therefore it may take a bit longer to complete the reboot process.