

How to Convert VHS to DVD with our DigiREC

Date: May 25th, 2004

Requirement:

- DigiREC – USB2.0 TVR and PVR portable device
- P4-2.0GHZ or higher, 512MB RAM, Win2K or XP with USB2.0
- Internal or External FireWire HDD – Recommend

Please use the best input video when is available:

1st choice S-Video: Clean and correct color

2nd choice Composite Video: Clean but not as good as S-Video input

3rd choice Tuner Coax cable: some what degrading video, due to tuner converting signal

Hardware Setup

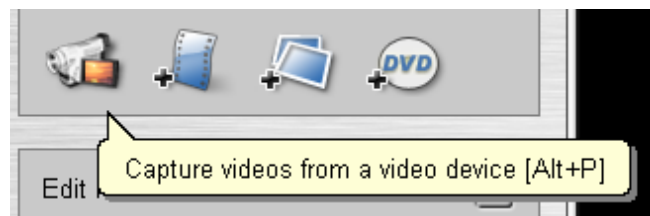
Please refer to DigiREC quick installation guide.

Software setup

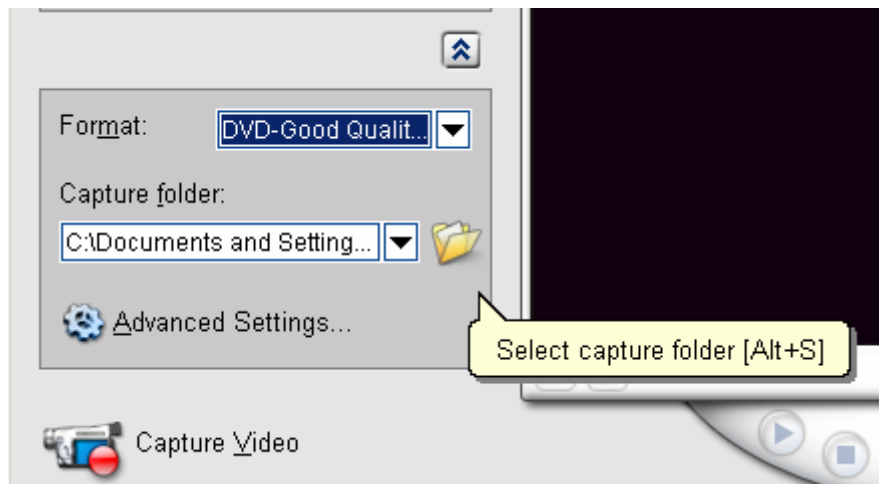
- 1- Open DMF (DVD Movie factory)
- 2- Select Create Video Disc Option
- 3- Select **Output Disc Format** as **DVD** and click OK



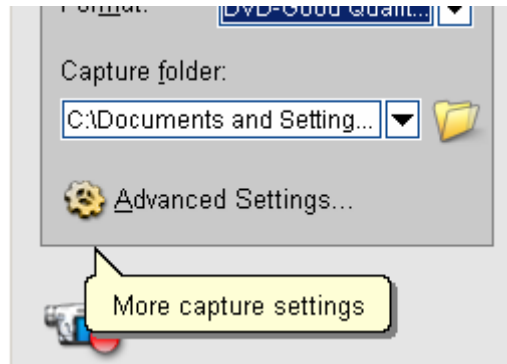
- 4- Select Capture function:
(Video Camera Icon)



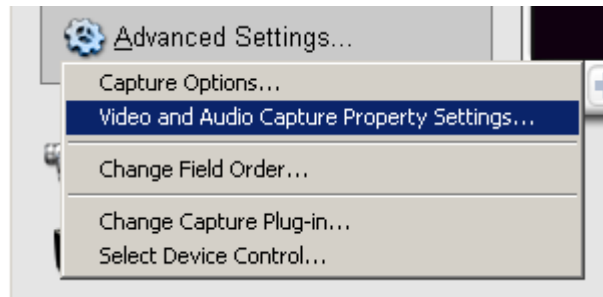
- 5- At the Capture Video Screen
If you have Internal/External FireWire HDD, then select this HDD to save the Capture Video, because this HDD run lots more efficient than IDE HDD
(You can always convert a new or existing/new IDE to internal FireWire with our IFC-1)



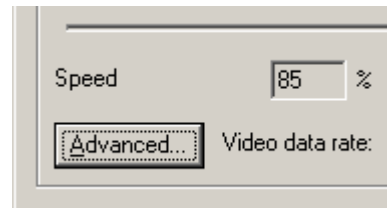
6- Select **Advanced Settings...** Option



7- At drop down window select **Video and Audio Capture Property settings...** Option



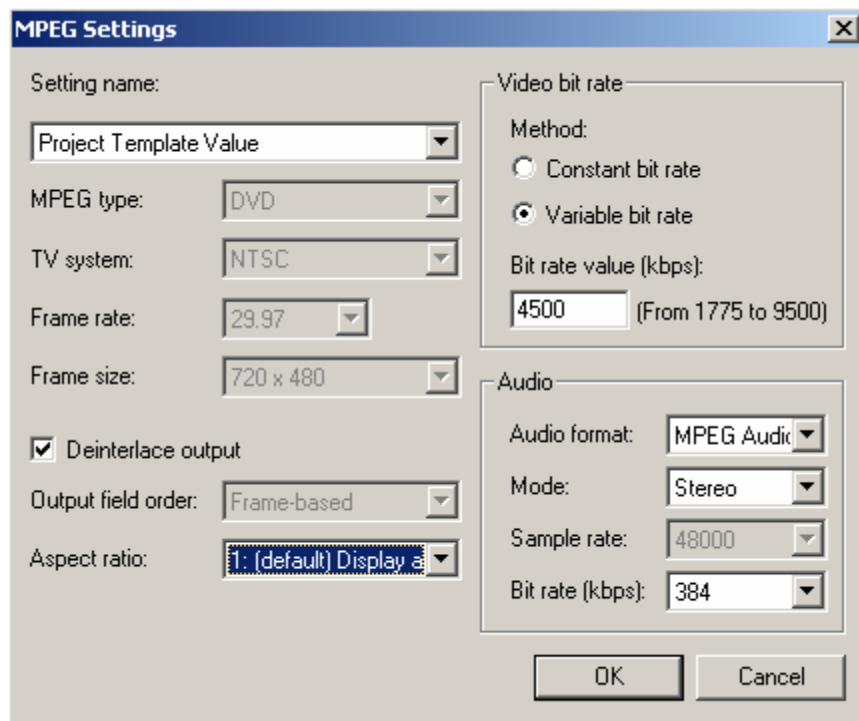
8- At the Video and Audio Capture Property Window
Select **Advanced** Button



Note: If the captured video appears to be jerking or the motion is not smooth
You may adjust the Video Quality Slider to left to improve the smoothness of the capturing video

9- MPEG Settings

At the MPEG settings window, please refer to the below

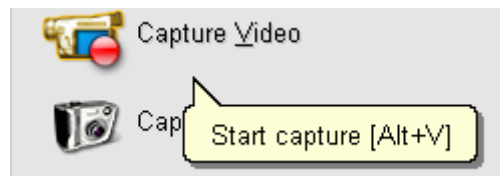


- Make sure:
- a) “**Deinterlace output**” is checked
 - b) Audio is set at “**MEPG audio**”
 - c) Select Video bit rate option
 - d) Change **Bit rate** value to **4000** to **5000**

Note: It depends on your system’s set up. You may need to adjust the Bit Rate value for the best result of captured video stream.

10- Click OK twice to get back to Capture screen.

11- Click Capture Icon to capture



It is recommended to test the capture set-up to find out what is the best for your computer. To do this please capture about 30 to 45 second of video and view it with any Multi-Media Players: Power DVD, Video@Home, Win DVD, Media Player...

Once is OK, please refer to the PDF manual for detail of the process editing and burn into DVD

Here is the manual located:

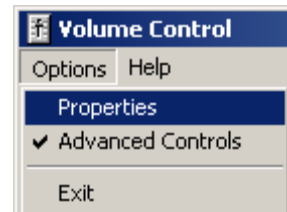
Start -> Programs -> Ulead DVD Movie Manufactory 3 SE -> Use Manual

If you have questions or comments please send an email to: support@datoptic.com

No sound problem.

If there is no sound when capture please do the following:

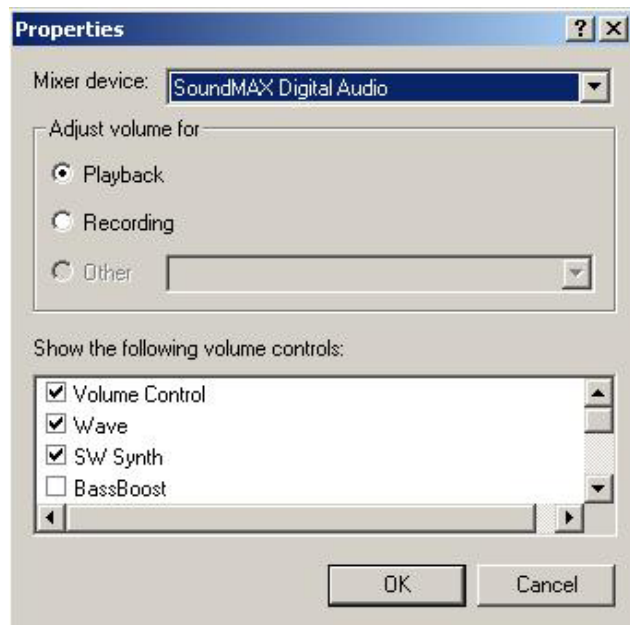
- 1) Connect all the necessary audio cables to and from DigiREC
Please refer to the Quick Installation Reference for more detail
- 2) Open Volume control program
Start -> Program -> Accessories -> Entertainment -> Volume control
- 3) At Volume control Program
Select Option -> Properties



- 4) On properties windows

Select Playback and make sure
- Line in is selected (Checked)
- Mic is selected (Checked)

Select Recording and make sure
- Line in is selected (Checked)
- Mic is selected (Checked)



Now the system can record and play sound from your input source - DigiREC

Poor quality image

Please use USB2.0 port, USB1.1 transfer rate TOOOOO SLOWWWWW for this application
Use USB2.0 PCI with NEC chip set will give you the best performance

Here are couple hints and tips for improve the system performance

15% minimum performance improvement:

<http://www.datoptic.com/PDF/Improve.pdf>

Down load and install the below files

Mother board with Intel chipset - Main Page www.intel.com

Intel® Chipset Software Installation Utility

http://downloadfinder.intel.com/scripts-df/Product_Filter.asp?ProductID=816

Intel Application Accelerator

http://downloadfinder.intel.com/scripts-df/Product_Filter.asp?ProductID=663

Mother board with VIA chipset www.viaarena.com Main page

Install the latest 4in1 Drive from

<http://www.viaarena.com/?PageID=300>

Mother board with SiS chipset www.sis.com Main page

Install the SiS IDE driver from

http://download.sis.com/download_step2.php?id=155792&country=USA&ftp=driver2