

ezRAID – Quick Installation Guide

Thank you for purchasing our ezRAID enclosure, to ensure the proper operation please follow the guide line below:

Content:

- 1) 1 FireWire 800 cable
- 2) 1 USB 2.0 cable
- 3) 1 power cable
- 4) 1 bag of screws and keys
- 5) ezRAID Quick Installation Guide
- 6) ezRAID tray manual

Assemble procedures

- 1) Install two (2) SATA hard drives into the removable tray of the ezRAID, please refer to installation of the tray manual, this can be found in the hard drives tray

Note: Recommend using the same type of HDD when use RAID 0 or 1

- 2) Configure your raid level from the back of the EzRAID by changing the ID on the Dip switch, by using a tip of pen or small screw driver to push in the + or – button. Here are the setting mode:
ID=0 sets ezRAID in Mirror mode – RAID 1 (safe mode)
ID=1 sets ezRAID in Span mode
ID=2 sets ezRAID in Stripe mode - RAID 0 (fast mode)
ID=3 sets ezRAID in Dual Drive mode

Note: In order for the change the operating mode, EzRAID needs to be power off.

- 3) Once the configuration is change, power ON and Connect the FireWire cable or USB from the back of the EzRAID to a FireWire or USB port on the computer.

For Mac user:

Please use Disk Utility to Initialize the hard drive when your OS detect the ezRAID.

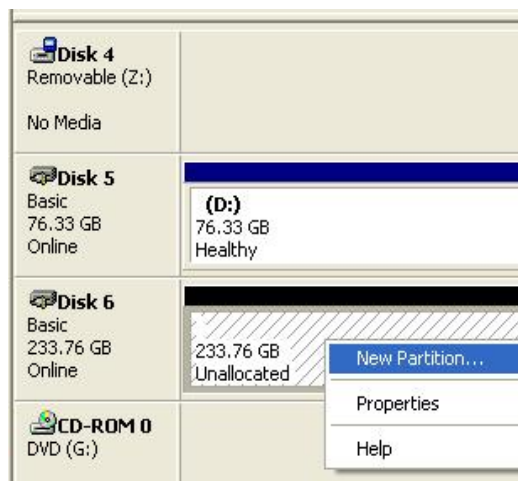
For Windows user:

Open Disk management and format your ezRAID hard drive
Right click on My Computer - Select Manage.

Select Disk management, this opens the Disk Management console



Initial and format ezRAID HDD.



Now your ezRAID is ready to use.

Advance feature:

Change the HDD tray's fan and temperature setting

- 1) Push MODE button for two (2) seconds, system will enter setting condition
- 2) Adjust the setting value by press the SET button.
ezRAID can monitor TWO set of fan-speed and Temperature at the same time. Here is the sequence of setting:

T1 → F1 → T2 → F2

Note: Variation of temp is 5 C and Fan Speed is 1000RPM

Alarm ON:

If there is an even that ezRAID detecting Fan Speed is under setting value or Temperature is higher then setting value. ezRAID LCD will flash and Buzzer will sound. If the problem is solved, then ezRAID will resume the normal operation, otherwise the alarm signal will sound 30second and then go to silent mode, however the digits on LCD keeps flashing until the cause is resolved.

LED indications:

Green – ON is power ON, normal operation condition
Red LED 1 and 2: SATA Hard Drive is being access
Yellow LED 1 and 2: Error with that particular hard drive / channel

RAID 0 or Dual drive

Yellow LED on – HDD missing or failed

RAID 1 – Mirror

Red blinking and Yellow on – RAID mirror being sync or rebuilt

If you encounter technical difficulty, please contact us at:
support@DATOptic.com

Please visit us at

DATOptic Inc.
1815 E Wilshire Ave # 906
Santa Ana, CA 92705
714 558 1808 - Tel
714 558 3229 – Fax
www.datoptic.com